

Verbindungselemente

Baureihe K

Baureihe K10

Seite 192



Baureihe K20

Seite 192



Baureihe K20K

Seite 193



Baureihe K20L

Seite 193



Baureihe K16

Seite 194



Baureihe K17

Seite 194



Baureihe K22

Seite 195



Baureihe K23

Seite 195



Baureihe K33

Seite 196



Baureihe K40

Seite 196



Baureihe K34

Seite 197



Baureihe K35

Seite 197



Baureihe K50

Seite 198



Baureihe K60

Seite 198



Baureihe K70

Seite 198



Baureihe K51

Seite 199



Baureihe K52

Seite 199



Baureihe K26

Seite 199



Baureihe K12

Seite 199



Baureihe K21

Seite 200



Baureihe K25

Seite 200



Baureihe K53

Seite 200



Baureihe K54

Seite 201



Baureihe K57

Seite 201



Baureihe K58

Seite 201



Baureihe K80

Seite 201



Baureihe K81

Seite 202



Baureihe K82

Seite 202



Baureihe K18

Seite 203



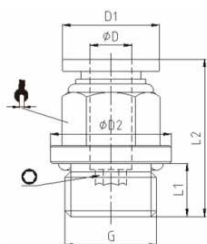
Baureihe K19

Seite 203



Baureihe K10

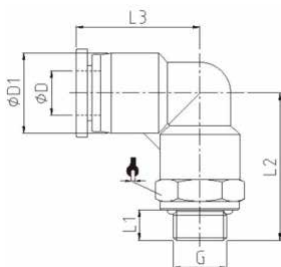
Gerader Einschraubanschluss



Typ	øD	G	øD1	øD2	L1	L2	☐	⊠
K105047	4	M5			3,5	17,5	2	8
K108047	4	G1/8	12	14	5,5	19,5	3	10
K104047	4	G1/4	12	17	7,5	18,6	3	10
K103047	4	G3/8	12	20	7,5	19,6	3	10
K105067	6	M5			3,5	18	2	10
K108067	6	G1/8	14	14	5,5	22	4	12
K104067	6	G1/4	14	17	7,5	22,5	4	12
K103067	6	G3/8	14	20	7,5	20,3	4	12
K102067	6	G1/2	14	24	10	23	4	12
K108087	8	G1/8	16	14	5,5	25	4	14
K104087	8	G1/4	16	17	7,5	24	5	14
K103087	8	G3/8	16	20	7,5	20,5	6	14
K102087	8	G1/2	16	24	10	24	6	14
K108107	10	G1/8	19,5	14	5,5	29	4	17
K104107	10	G1/4	19,5	17	7,5	30,5	6	17
K103107	10	G3/8	19,5	20	7,5	27	8	17
K102107	10	G1/2	19,5	24	10	30	8	17
K108127	12	G1/8	23	14	5,5	30	4	21
K104127	12	G1/4	23	17	7,5	33	6	21
K103127	12	G3/8	23	20	7,5	28	8	21
K102127	12	G1/2	23	24	10	30,5	8	21
K103147	14	G3/8	23	22	7,5	32,5	8	22
K102147	14	G1/2	23	24	10	30	10	24
K103167	16	G3/8	27	20	7,5	35	8	24
K102167	16	G1/2	27	24	10	37	10	24

Baureihe K20

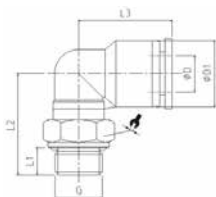
Winkel- Einschraubanschluss



Typ	øD	G	L1	L2	L3	øD1	⊠
K205047	4	M5	3,5	17,2	14	9,5	8
K208047	4	G1/8	5,5	24,3	19	11,5	14
K204047	4	G1/4	7,5	26,8	19	11,5	17
K205067	6	M5	3,5	17,2	16	11,5	8
K208067	6	G1/8	5,5	24,2	19,2	13,5	14
K204067	6	G1/4	7,5	26,7	19,2	13,5	17
K203067	6	G3/8	7,5	27,2	19,2	13,5	20
K202067	6	G1/2	10	29,7	19,2	13,5	24
K208087	8	G1/8	5,5	27	22,5	15	14
K204087	8	G1/4	7,5	29,5	22,5	15	17
K203087	8	G3/8	7,5	30	22,5	15	20
K202087	8	G1/2	10	32,5	22,5	15	24
K208107	10	G1/8	5,5	31,8	27,8	19	17
K204107	10	G1/4	7,5	34,3	27,8	19	17
K203107	10	G3/8	7,5	34,3	27,8	19	20
K202107	10	G1/2	10	37,8	27,8	19	24
K208127	12	G1/8	5,5	33,5	29,5	21,5	21
K204127	12	G1/4	7,5	36	29,5	21,5	21
K203127	12	G3/8	7,5	36	29,5	21,5	21
K202127	12	G1/2	10	39	29,5	21,5	24
K203147	14	G3/8	7,5	39	30,5	23,5	22
K202147	14	G1/2	10	42,5	30,5	23,5	24
K203167	16	G3/8	7,5	42,5	33	26,5	24
K202167	16	G1/2	10	44,5	33	26,5	24

Winkel-Einschraubanschluss drehbar, kurz

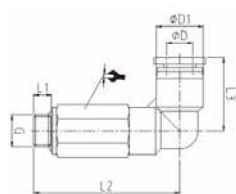
Baureihe K20K



Typ	øD	G	L1	L2	L3	øD1	⊠
K20K8047	4	G1/8	5.5	22	19	11.5	14
K20K4047	4	G1/4	7.5	19.5	19	11.5	17
K20K3047	4	G3/8	7.5	20	19	11.5	20
K20K8067	6	G1/8	5.5	23	19.2	13.5	14
K20K4067	6	G1/4	7.5	20.5	19.2	13.5	17
K20K3067	6	G3/8	7.5	21	19.2	13.5	20
K20K2067	6	G1/2	10	23.5	19.2	13.5	24
K20K8087	8	G1/8	5.5	23.7	22.5	15	14
K20K4087	8	G1/4	7.5	21.2	22.5	15	17
K20K3087	8	G3/8	7.5	21.7	22.5	15	20
K20K2087	8	G1/2	10	24.2	22.5	15	24
K20K8107	10	G1/8	5.5	26	27.8	19	14
K20K4107	10	G1/4	7.5	28	27.8	19	17
K20K3107	10	G3/8	7.5	23.7	27.8	19	20
K20K2107	10	G1/2	10	26.2	27.8	19	24
K20K8127	12	G1/8	5.5	27.2	29.5	21.5	15
K20K4127	12	G1/4	7.5	29.2	29.5	21.5	17
K20K3127	12	G3/8	7.5	25	29.5	21.5	20
K20K2127	12	G1/2	10	27.5	29.5	21.5	24
K20K3147	14	G3/8	7.5	32	29.5	23.5	20
K20K2147	14	G1/2	10	30.5	29.5	23.5	24
K20K3167	16	G3/8	7.5	33	34	26.5	20
K20K2167	16	G1/2	10	31.5	34	26.5	24

Winkel-Einschraubanschluss, lang

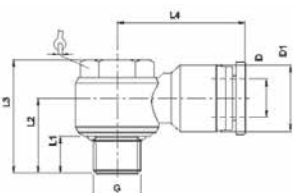
Baureihe K20L



Typ	øD	G	L1	L2	L3	øD1	⊠
K20L5047	4	M5	3,5	29,2	14	9,5	8
K20L8047	4	G1/8	5.5	36.3	19	11.5	14
K20L4047	4	G1/4	7.5	38.3	19	11.5	17
K20L5067	6	M5	3,5	29,2	16	11,5	8
K20L8067	6	G1/8	5.5	37.7	19.2	13.5	14
K20L4067	6	G1/4	7.5	40.2	19.2	13.5	17
K20L3067	6	G3/8	7.5	41.7	19.2	13.5	20
K20L2067	6	G1/2	10	45.7	19.2	13.5	24
K20L8087	8	G1/8	5.5	42.3	22.5	15	14
K20L4087	8	G1/4	7.5	44.3	22.5	15	17
K20L3087	8	G3/8	7.5	46	22.5	15	20
K20L2087	8	G1/2	10	48.3	22.5	15	24
K20L8107	10	G1/8	5.5	53.8	27.8	19	17
K20L4107	10	G1/4	7.5	54.3	27.8	19	17
K20L3107	10	G3/8	7.5	54.3	27.8	19	20
K20L2107	10	G1/2	10	57.8	27.8	19	24
K20L8127	12	G1/8	5.5	56.5	29.5	21.5	21
K20L4127	12	G1/4	7.5	59	29.5	21.5	21
K20L3127	12	G3/8	7.5	59.5	29.5	21.5	21
K20L2127	12	G1/2	10	62.5	29.5	21.5	24
K20L3148	14	G3/8					
K20L2148	14	G1/2					
K20L3168	16	G3/8					
K20L2168	16	G1/2					

Baureihe K16

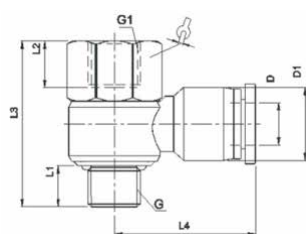
Winkel-Einschraubanschluss drehbar



Typ	øD	G	L1	L2	L3	L4	øD1	
K165047	4	M5						
K168047	4	G1/8	5.5	14.5	23	23.5	11.5	12
K164047	4	G1/4	7.5	17.3	26.3	25.5	11.5	14
K165067	6	M5						
K168067	6	G1/8	5.5	14.5	23	23.5	13.5	12
K164067	6	G1/4	7.5	16.7	26.3	25.4	13.5	14
K163067	6	G3/8	7.5	19	32	29.5	13.5	19
K162067	6	G1/2	10	24.5	39	32.5	13.5	24
K168087	8	G1/8	5.5	15.2	23	26.5	15	12
K164087	8	G1/4	7.5	18	26.3	28.9	15	14
K163087	8	G3/8	7.5	19	32	29.8	15	19
K162087	8	G1/2	10	24.5	39	32.5	15	24
K168107	10	G1/8	5.5	17.2	23	30.5	19	12
K164107	10	G1/4	7.5	20	26.3	32.6	19	14
K163107	10	G3/8	7.5	21	32	33	19	19
K162107	10	G1/2	10	24.7	39	36	19	24
K168127	12	G1/8						
K164127	12	G1/4	7.5	21.3	26.3	33.5	21.5	14
K163127	12	G3/8	7.5	22.2	32	35.5	21.5	19
K162127	12	G1/2	10	26	39	36.5	21.5	24
K163147	14	G3/8						
K162147	14	G1/2						
K163167	16	G3/8						
K162167	16	G1/2						

Baureihe K17

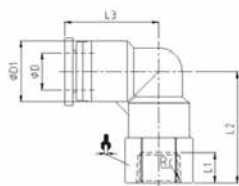
Winkel-Einschraubanschluss mit Innengewinde, drehbar



Typ	øD	G	G1	L1	L2	L3	L4	øD1	
K175047	4	M5	M5						
K178047	4	G1/8	G1/8	5.5	8.5	29	23.5	11.5	14
K174047	4	G1/4	G1/4	7.5	11	35	25.5	11.5	17
K175067	6	M5	M5						
K178067	6	G1/8	G1/8	5.5	8.5	29	23.5	13.5	14
K174067	6	G1/4	G1/4	7.5	11	35	25.4	13.5	17
K173067	6	G3/8	G3/8	7.5	12	41	29.5	13.5	21
K172067	6	G1/2	G1/2	10	14	47.5	32.5	13.5	24
K178087	8	G1/8	G1/8	5.5	8.5	29	26.5	15	14
K174087	8	G1/4	G1/4	7.5	11	35	28.9	15	17
K173087	8	G3/8	G3/8	7.5	12	41	29.8	15	21
K172087	8	G1/2	G1/2	10	14	47.5	32.5	15	24
K178107	10	G1/8	G1/8	5.5	8.5	32	30.3	19	14
K174107	10	G1/4	G1/4	7.5	11	36	32.6	19	17
K173107	10	G3/8	G3/8	7.5	12	41	33	19	21
K172107	10	G1/2	G1/2	10	14	47.5	36	19	24
K174127	12	G1/4	G1/4	7.5	11	36	33.5	21.5	17
K173127	12	G3/8	G3/8	7.5	12	41	35.5	21.5	21
K172127	12	G1/2	G1/2	10	14	47.5	36.5	21.5	24
K173147	14	G3/8	G3/8						
K172147	14	G1/2	G1/2						
K173167	16	G3/8	G3/8						
K172167	16	G1/2	G1/2						

Winkel-Aufschraubanschluss

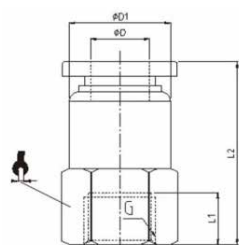
Baureihe K22



Typ	$\varnothing D$	R	L1	L2	L3	$\varnothing D1$	
K225040	4	M5	5.5	19.5	19	11.5	10
K228040	4	Rc1/8	8.5	23.3	19	11.5	14
K224040	4	Rc1/4	11	25.8	19	11.5	17
K225060	6	M5	5.5	19.2	19.2	13.5	12
K228060	6	Rc1/8	8.5	22.7	19.2	13.5	14
K224060	6	Rc1/4	11	25.7	19.2	13.5	17
K223060	6	Rc3/8	12	27.2	19.2	13.5	21
K228080	8	Rc1/8	8.5	25	22.5	15	14
K224080	8	Rc1/4	11	28.5	22.5	15	17
K223080	8	Rc3/8	12	30	22.5	15	21
K222080	8	1/2					
K228100	10	1/8					
K224100	10	Rc1/4	11	32.3	27.8	19	17
K223100	10	Rc3/8	12	33.8	27.8	19	21
K222100	10	Rc1/2	14	36.8	27.8	19	24
K228120	12	1/8					
K224120	12	Rc1/4	11	34.5	29.5	21.5	21
K223120	12	Rc3/8	12	35.5	29.5	21.5	21
K222120	12	Rc1/2	14	38	29.5	21.5	24
K223140	14	3/8					
K222140	14	1/2					
K223160	16	3/8					
K222160	16	1/2					

Gerader Aufschraubanschluss

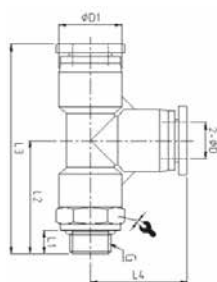
Baureihe K23



Typ	$\varnothing D$	G	L1	L2	$\varnothing D1$	
K235040	4	M5				
K236040	4	G1/8	8.5	24	10	14
K238040	4	G1/4	11	26.5	10	17
K233040	4	G3/8	12	28	10	21
K235060	6	M5				
K238060	6	G1/8	8.5	24.5	12	14
K234060	6	G1/4	11	27	12	17
K233060	6	G3/8	12	28	12	21
K232060	6	G1/2	14	30	12	24
K238080	8	G1/8	8.5	26	14	14
K234080	8	G1/4	11	28.5	14	17
K233080	8	G3/8	12	29.5	14	21
K232080	8	G1/2	14	31.5	14	24
K238100	10	G1/8	8.5	29.5	17	17
K234100	10	G1/4	11	32.7	17	17
K233100	10	G3/8	12	33	17	21
K232100	10	G1/2	14	35.7	17	24
K238120	12	G1/8	8.5	31	20	21
K234120	12	G1/4	11	33.5	20	21
K233120	12	G3/8	12	34.5	20	21
K232120	12	G1/2	14	36.5	20	24
K233140	14	G3/8				
K232140	14	G1/2				
K233160	16	G3/8				
K232160	16	G1/2				

Baureihe K33

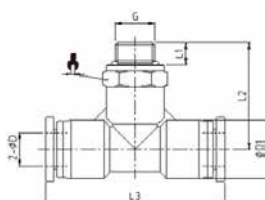
T-Einschraubanschluss, drehbar



Typ	øD	G	L1	L2	L3	L4	øD1	⊠
K335047	4	M5						
K338047	4	G1/8	5.5	24.3	43.3	19	11.5	14
K334047	4	G1/4	7.5	26.8	45.8	19	11.5	17
K335067	6	M5						
K338067	6	G1/8	5.5	24.2	43.4	19.2	13.5	14
K334067	6	G1/4	7.5	26.7	46	19.2	13.5	17
K333067	6	G3/8	7.5	27.2	46.5	19.2	13.5	20
K332067	6	G1/2	10	29.7	49	19.2	13.5	24
K338087	8	G1/8	5.5	27	49.5	22.5	15	14
K334087	8	G1/4	7.5	29.5	52	22.5	15	17
K333087	8	G3/8	7.5	30	52.5	22.5	15	20
K332087	8	G1/2	10	32.5	55	22.5	15	24
K338107	10	G1/8	5.5	32.5	61	27.8	19	17
K334107	10	G1/4	7.5	35	63.5	27.8	19	17
K333107	10	G3/8	7.5	35	63.5	27.8	19	20
K332107	10	G1/2	10	38.5	67	27.8	19	24
K338127	12	G1/8	5.5	33.5	63	29.5	21.5	21
K334127	12	G1/4	7.5	36	65.5	29.5	21.5	21
K333127	12	G3/8	7.5	36	65.5	29.5	21.5	21
K332127	12	G1/2	10	39	68.5	29.5	21.5	24
K333147	14	G3/8	7.5	39.5	66.5	27	23.5	22
K332147	14	G1/2	10	43	68.5	27	23.5	24
K333167	16	G3/8	7.5	42.5	75.5	33	26.5	24
K332167	16	G1/2	10	44	77	33	26.5	24

Baureihe K40

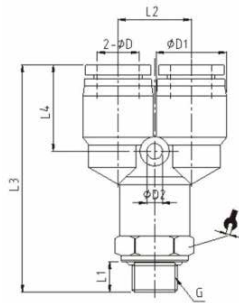
T-Einschraubanschluss, drehbar



Typ	øD	G	L1	L2	L3	øD1	⊠
K405047	4	M5					
K408047	4	G1/8	5.5	24.3	38	11.5	14
K404047	4	G1/4	7.5	26.8	38	11.5	17
K403047	4	G3/8	7.5	27.3	38	1.5	20
K405067	6	M5					
K408067	6	G1/8	5.5	24.2	39	13.5	14
K404067	6	G1/4	7.5	26.7	39	13.5	17
K403067	6	G3/8	7.5	27.2	39	13.5	20
K402067	6	G1/2	10	29.7	39	13.5	24
K408087	8	G1/8	5.5	27	45	15	14
K404087	8	G1/4	7.5	29.5	45	15	17
K403087	8	G3/8	7.5	30	45	15	20
K402087	8	G1/2	10	32.5	45	15	24
K408107	10	G1/8	5.5	32.3	57	19	17
K404107	10	G1/4	7.5	34.8	57	19	17
K403107	10	G3/8	7.5	34.8	57	19	20
K402107	10	G1/2	10	38.3	57	19	24
K408127	12	G1/8	5.5	33.5	59	21.5	21
K404127	12	G1/4	7.5	36	59	21.5	21
K403127	12	G3/8	7.5	36	59	21.5	21
K402127	12	G1/2	10	39	59	21.5	24
K403147	14	G3/8	7.5	39.5	54	23.5	22
K402147	14	G1/2	10	43	54	23.5	24
K403167	16	G3/8	7.5	42.5	66	26.5	24
K402167	16	G1/2	10	44.5	66	26.5	24

Y-Einschraubanschluss, drehbar

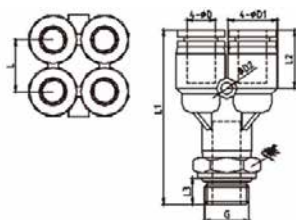
Baureihe K34



Typ	øD	G	L1	L2	L3	L4	øD1	øD2	⊠
K345047	4	M5							
K348047	4	G1/8	5.5	11	43	14.5	11.5	3.2	14
K344047	4	G1/4	7.5	11	45.5	14.5	11.5	3.2	17
K343047	4	G3/8	7.5	11	46	14.5	11.5	3.2	20
K345067	6	M5							
K348067	6	G1/8	5.5	13	44	15	13.5	3.2	14
K344067	6	G1/4	7.5	13	46.5	15	13.5	3.2	17
K343067	6	G3/8	7.5	13	47	15	13.5	3.2	20
K342067	6	G1/2	10	13	49.5	15	13.5	3.2	24
K348087	8	G1/8	5.5	15	46.3	18	15	3.2	14
K344087	8	G1/4	7.5	15	48.8	18	15	3.2	17
K343087	8	G3/8	7.5	15	49.3	18	15	3.2	20
K342087	8	G1/2	10	15	51.8	18	15	3.2	24
K348107	10	G1/8	5.5	18	56	21	19	4.2	17
K344107	10	G1/4	7.5	18	58.5	21	19	4.2	17
K343107	10	G3/8	7.5	18	58.5	21	19	4.2	20
K342107	10	G1/2	10	18	62	21	19	4.2	24
K348127	12	G1/8	5.5	21	59.5	21.5	21.5	4.2	21
K344127	12	G1/4	7.5	21	62	21.5	21.5	4.2	21
K343127	12	G3/8	7.5	21	62	21.5	21.5	4.2	21
K342127	12	G1/2	10	21	65	21.5	21.5	4.2	24
K343147	14	G3/8							
K342147	14	G1/2							
K343167	16	G3/8							
K342167	16	G1/2							

Doppel-Y Einschraubanschluss, drehbar

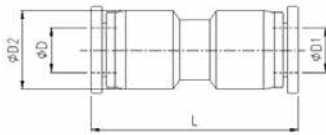
Baureihe K35



Typ	øD	G	L3	øD1	øD2	L	L1	L2	⊠
K358047	4	G1/8	5.5	11.3	3.2	11	43	15	14
K354047	4	G1/4	7.5	11.3	3.2	11	45.5	15	17
K358067	6	G1/8	5.5	13.3	3.2	13	46.5	15.5	14
K354067	6	G1/4	7.5	13.3	3.2	13	49	15.5	17
K353067	6	G3/8	7.5	13.3	3.2	13	49.5	15.5	20
K352067	6	G1/2	10	13.3	3.2	13	52	15.5	24
K358087	8	G1/8	5.5	14.8	3.2	15	47.5	16.5	14
K354087	8	G1/4	7.5	14.8	3.2	15	50	16.5	17
K353087	8	G3/8	7.5	14.8	3.2	15	50.5	16.5	20
K352087	8	G1/2	10	14.8	3.2	15	53	16.5	24

Baureihe K50

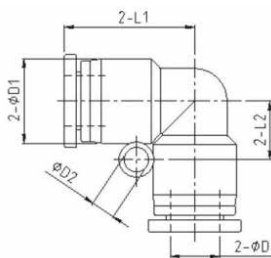
Gerader Verbinder



Typ	ϕD	$\phi D1$	$\phi D2$	$\phi D3$	L
K500040	4	4	11.5	11.5	34
K500060	6	6	13.5	13.5	35.5
K500080	8	8	15	15	38.5
K500100	10	10	19	19	48
K500120	12	12	21.5	21.5	49
K500140	14	14	23.5	23.5	48
K500160	16	16	26.5	26.5	64
K506040	6	4	13.5	11.5	34.5
K508040	8	4	15	13.5	36.5
K508060	8	6	15	13.5	36.5
K501060	10	6	19	15	44
K501080	10	8	19	15	44
K501260	12	6	21.5	19	48
K501280	12	8	21.5	19	48
K501210	12	10	21.5	19	49
K501412	14	12	23.5	23.5	48
K501612	16	12	26.5	26.5	64
K501614	16	14	26.5	26.5	64

Baureihe K60

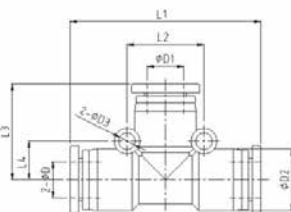
Winkel-Verbinder



Typ	ϕD	$\phi D1$	$\phi D2$	L1	L2
K600040	4	11.5	3.2	19	7
K600060	6	13.5	3.2	19.2	8
K600080	8	15	3.2	22.5	10
K600100	10	19	4.2	27.8	12
K600120	12	21.5	4.2	29.5	13.5
K600140	14	23.5		30.5	
K600160	16	26.5		33	

Baureihe K70

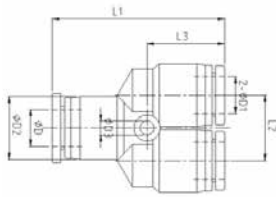
T-Verbinder



Typ	ϕD	$\phi D1$	$\phi D2$	$\phi D3$	L1	L2	L3	L4
K700040	4	4	11.5	3.2	38	14	19	7
K700060	6	6	13.5	3.2	39	16	19.2	8
K700080	8	8	15	3.2	45	18	22.5	9
K700100	10	10	19	4.2	57	24	27.8	12
K700120	12	12	21.5	4.3	59	27	29.5	13.5
K700140	14	14	23.5		59		29.5	
K700160	16	16	26.5		64		32	
K706040	6	4	13.5	3.2	39	16	19.2	8
K708040	8	4	15	3.2	45	18	22.5	9
K708060	8	6	15	3.2	45	18	22.5	9
K701060	10	6	19	4.2	57	24	26.3	12
K701080	10	8	19	4.2	57	24	26.8	12
K701280	12	8	21.5	4.3	59	27	28.5	13.5
K701210	12	10	21.5	4.3	59	27	29.5	13.5
K701412	14	12	23.5		59		29.5	
K701612	16	12	26.5		64		32	
K701614	16	14	26.5		64		32	

Y-Anschluss

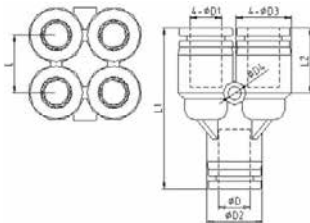
Baureihe K51



Typ	øD	øD1	øD2	øD3	L1	L2	L3
K510040	4	4	11.5	3.2	36.5	11	14.5
K510060	6	6	13.5	3.2	37.5	13	15
K510080	8	8	15	3.2	39.8	15	18
K510100	10	10	19	4.2	50	18	21
K510120	12	12	21.5	4.2	53	21	21.5
K510140	14	14					
K510160	16	16	26.5	4.3	58.5	25	22
K516040	6	4	13.5	3.2	37.5	13	15
K518040	8	4	15	3.2	39.8	15	18
K518060	8	6	15	3.2	39.8	15	18
K511060	10	6	19	4.2	39.8	18	21
K511080	10	8	19	4.2	50	18	21
K511280	12	8	21.5	4.2	53	21	21.5
K511210	12	10	21.5	4.2	53	21	21.5

Doppel-Y

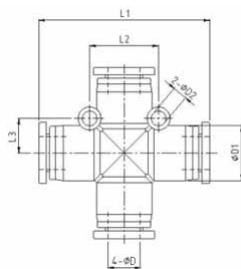
Baureihe K52



Typ	øD	øD1	øD2	øD3	øD4	L	L1	L2
K528040	6	4	13.3	11.3	3.2	11	36.5	15
K528080	8	8	14.8	14.8	3.2	15	41	16.5
K528040	8	4	14.8	11.3	3.2	11	38.5	15
K528060	8	6	14.8	13.3	3.2	13	40	15.5

Kreuz-Verbinder

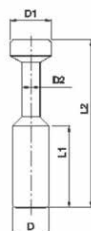
Baureihe K26



Typ	øD	øD1	øD2	L1	L2	L3
K260040	4	11.5	3.2	38	14	7
K260080	6	13.5	3.2	39	16	8
K260080	8	15	3.2	45	18	9
K260100	10	19	4.2	57	24	12
K260120	12	21.5	4.3	59	27	13.5

Stopfen

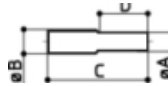
Baureihe K12



Typ	øD	øD1	øD2	L1	L2
K120040	4	5	3	15	28
K120060	6	7	3	17	33
K120080	8	9	4	18	37
K120100	10	11	5	20.5	42
K120120	12	13	6	23	44
K120140	14				
K120160	16				

Baureihe K21

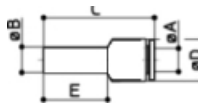
Doppelstecknippel



Typ	$\varnothing A$	$\varnothing B$
K210040	4	4
K210060	6	6
K210080	8	8
K210100	10	10
K210120	12	12
K210160	16	16
K214060	4	6
K214080	4	8
K216080	6	8
K216100	6	10
K218100	8	10
K218120	8	12
K211120	10	12
K212160	12	16

Baureihe K25

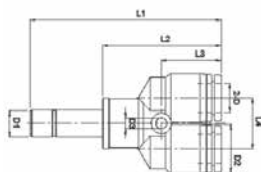
Reduzierung



Typ	$\varnothing A$	$\varnothing B$
K254060	4	6
K254080	4	8
K256080	6	8
K256100	6	10
K258100	8	10
K258120	8	12
K251120	10	12
K252160	12	16

Baureihe K53

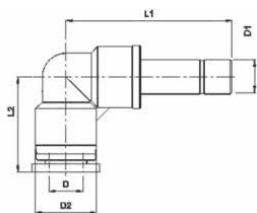
Y-Steckanschluss



Typ	$\varnothing D$	$\varnothing D1$	$\varnothing D2$	$\varnothing D3$	L1	L2	L3	L4
K530040	4	4	11.5	3.2	52.5	33.5	14.5	11
K530080	6	6	13.5	3.2	53.8	34.8	15	13
K530080	8	8	15	3.2	57.8	37.3	18	15
K530100	10	10	19	4.2	71	46.5	21	18
K530120	12	12	21.5	4.2	75.5	49.5	21.5	21
K530140	14	14						
K530160	16	16						
K534060	4	6	11.5	3.2	52.8	33.8	14.5	11
K538040	8	4						
K536080	6	8	13.5	3.2	55.5	35	15	13
K536010	10	6						
K538100	8	10	15	3.2	62	37.3	18	15
K531280	12	8						
K531120	10	12	19	4.2	72.5	46.5	21	18
K531612	16	12						

Winkel-Steckanschluss

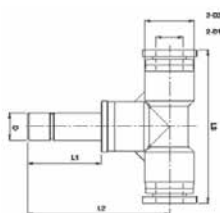
Baureihe K54



Typ	øD	øD1	øD2	L1	L2
K544040	4	4	11.5	33.7	19
K546060	6	6	13.5	34	19.2
K548080	8	8	15	38.5	22.5
K541010	10	10	19	46.8	27.8
K541212	12	12	21.5	49.5	29.5
K544060	4	6	11.5	34	19
K546080	6	8	13.5	35.7	19.2
K548010	8	10	15	42.5	22.5
K541012	10	12	19	48.3	27.8

T-Steckanschluss

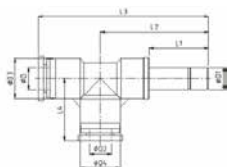
Baureihe K57



Typ	øD	øD1	øD2	L1	L2	L3
K574040	4	4	11.5	19	35	38
K576060	6	6	13.5	19	35.8	39
K578080	8	8	15	20.5	40.5	45
K571010	10	10	19	24.5	49.5	57
K571212	12	12	21.5	26	52	59
K574060	4	6	11.5	19	35.3	38
K576080	6	8	13.5	20.5	37.5	39
K578010	8	10	15	24.5	43.5	45
K571012	10	12	19	26	51	57

T-Steckanschluss

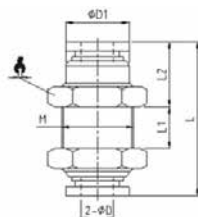
Baureihe K58



Typ	øD	øD1	øD2	øD3	øD4	L1	L2	L3	L4
K584040	4	4	4	11.5	11.5	19	35	54	19
K586060	6	6	6	13.5	13.5	19	35.8	55	19.2
K588080	8	8	8	15	15	20.5	40.5	63	22.5
K581010	10	10	10	19	19	24.5	49.5	77.3	27.8
K581212	12	12	12	21.5	21.5	26	52	81.5	29.5
K586640	6	6	4	13.5	13.5	19	35.8	55	19.2
K588840	8	8	6	15	15	20.5	40.5	63	22.5
K581180	10	10	8	19	19	24.5	49.5	77.3	27.8
K582210	12	12	10	21.5	21.5	26	52	81.5	29.5

Schottverbinder

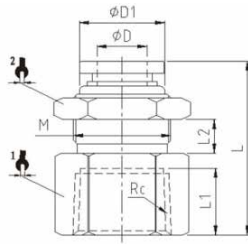
Baureihe K80



Typ	øD	øD1	M	L	L1	L2	☒
K800040	4	10	M12x1	30.5	9.5	10	14
K800060	6	12	M14x1	31	7.5	10.6	17
K800080	8	14	M16x1	34.5	6.5	12	19
K800100	10	17	M20x1	41.5	11.5	12	24
K800120	12	20	M22x1	44.5	12.5	13.5	26
K800140	14	22	M24x1	45	14	12.5	27
K800160	16	24	M26x1	48	16	13.5	29

Baureihe K81

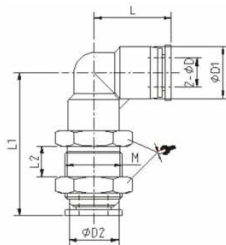
Aufschraub-Schottverbinder



Typ	ϕD	Rc	L	L1	L2	$\phi D1$	1	2	M
K815040	4	M5							
K816040	4	Rc1/8	24	8.5	6	10	14	14	M12x1
K818040	4	Rc1/4	26.5	11	6	10	17	14	M12x1
K815060	6	M5							
K818060	6	Rc1/8	24.8	8.5	7	12	17	17	M14x1
K814060	6	Rc1/4	29.5	11	7	12	17	17	M14x1
K813060	6	Rc3/8	30.5	12	7	12	21	17	M14x1
K812060	6	Rc1/2	33	14	7	12	24	17	M14x1
K818080	8	Rc1/8	26.5	8.5	7.5	14	19	19	M16x1
K814080	8	Rc1/4	32	11	7.5	14	19	19	M16x1
K813080	8	Rc3/8	34.3	12	7.5	14	21	19	M16x1
K812080	8	Rc1/2	36.5	14	7.5	14	24	19	M16x1
K818010	10	Rc1/8	30	8.5	9.5	17	24	24	M20x1
K814010	10	Rc1/4	32.5	11	9.5	17	24	24	M20x1
K813010	10	Rc3/8	34	12	9.5	17	24	24	M20x1
K812010	10	Rc1/2	38	14	9.5	17	24	24	M20x1
K818012	12	Rc1/8	31.5	8.5	10	20	24	26	M22x1
K814012	12	Rc1/4	34	11	10	20	24	26	M22x1
K813012	12	Rc3/8	35	12	10	20	24	26	M22x1
K812012	12	Rc1/2	37	14	10	20	24	26	M22x1
K813014	14	Rc3/8							
K812014	14	Rc1/2							
K813016	16	Rc3/8							
K812016	16	Rc1/2							

Baureihe K82

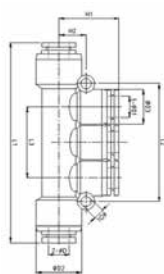
Winkel-Schottverbinder



Typ	ϕD	$\phi D1$	$\phi D2$	L	L1	L2	M	1
K820040	4	11.5	10	19	31	6	M12x1	14
K820060	6	13.5	12	19.2	34.5	7	M14x1	17
K820080	8	15	14	22.5	41	7.5	M16x1	19
K820100	10	19	17	28.5	47	9.5	M20x1	24
K820120	12	21.5	20	29.5	49	10	M22x1	26

T-Mehrfachverbinder

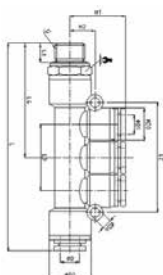
Baureihe K18



Typ	øD	øD1	øD2	øD3	øD4	L1	L2	L3	H1	H2
K180040	4	4	14.5	13	3.2	57	36	22	19	8
K180060	6	6	14.5	13	3.2	58	36	22	19.5	8
K180080	8	8	19	14.5	4.2	84	61	29	24.5	11.5
K180100	10	10	19	14.5	4.2	87	61	29	26	11.5
K186040	6	4	14.5	13	3.2	58	36	22	19	8
K188040	8	4	18.4	14.5	3.2	62	42	26	20.5	9
K188060	8	6	18.4	14.5	3.2	81	48	29	24.5	9
K181060	10	6	19	14.5	4.2	87	61	29	24.5	11.5
K181080	10	8	19	14.5	4.2	87	61	29	24.5	11.5

T-Einschraub-Mehrfachverbinder

Baureihe K19



Typ	øD	G	øD1	øD2	øD3	øD4	H1	H2	L1	L2	L3	L4	☐
K198047	4	G1/8	4	14.5	13	3.2	19	9	68	5.5	42	26	14
K194047	4	G1/4	4	14.5	13	3.2	19	9	70	7.5	42	26	17
K198067	6	G1/8	6	14.5	13	3.2	20.5	9	68	5.5	42	26	14
K194087	6	G1/4	6	14.5	13	3.2	20.5	9	70	7.5	42	26	17
K193087	6	G3/8	6	14.5	13	3.2	20.5	9	70.5	7.5	42	26	20
K192087	6	G1/2	6	14.5	13	3.2	20.5	9	73	10	42	26	24
K198087	8	G1/8	8	18.4	14.5	3.2	24	11	87	5.5	48	29	14
K194087	8	G1/4	8	18.4	14.5	3.2	24	11	89	7.5	48	29	17
K193087	8	G3/8	8	18.4	14.5	3.2	24	11	89.5	7.5	48	29	20
K192087	8	G1/2	8	18.4	14.5	3.2	24	11	92.5	10	48	29	24
K198107	10	G1/8	10	18.4	18.4	4.2	27.5	12	95.5	5.5	60.8	37	17
K194107	10	G1/4	10	18.4	18.4	4.2	27.5	12	98	7.5	60.8	37	17
K193107	10	G3/8	10	18.4	18.4	4.2	27.5	12	98.5	7.5	60.8	37	20
K192107	10	G1/2	10	18.4	18.4	4.2	27.5	12	101.5	10	60.8	37	24
K198647	1/8	6-4											
K194847	1/4	8-4											
K194867	1/4	8-6											
K194187	1/4	10-8											
K193187	3/8	10-8											